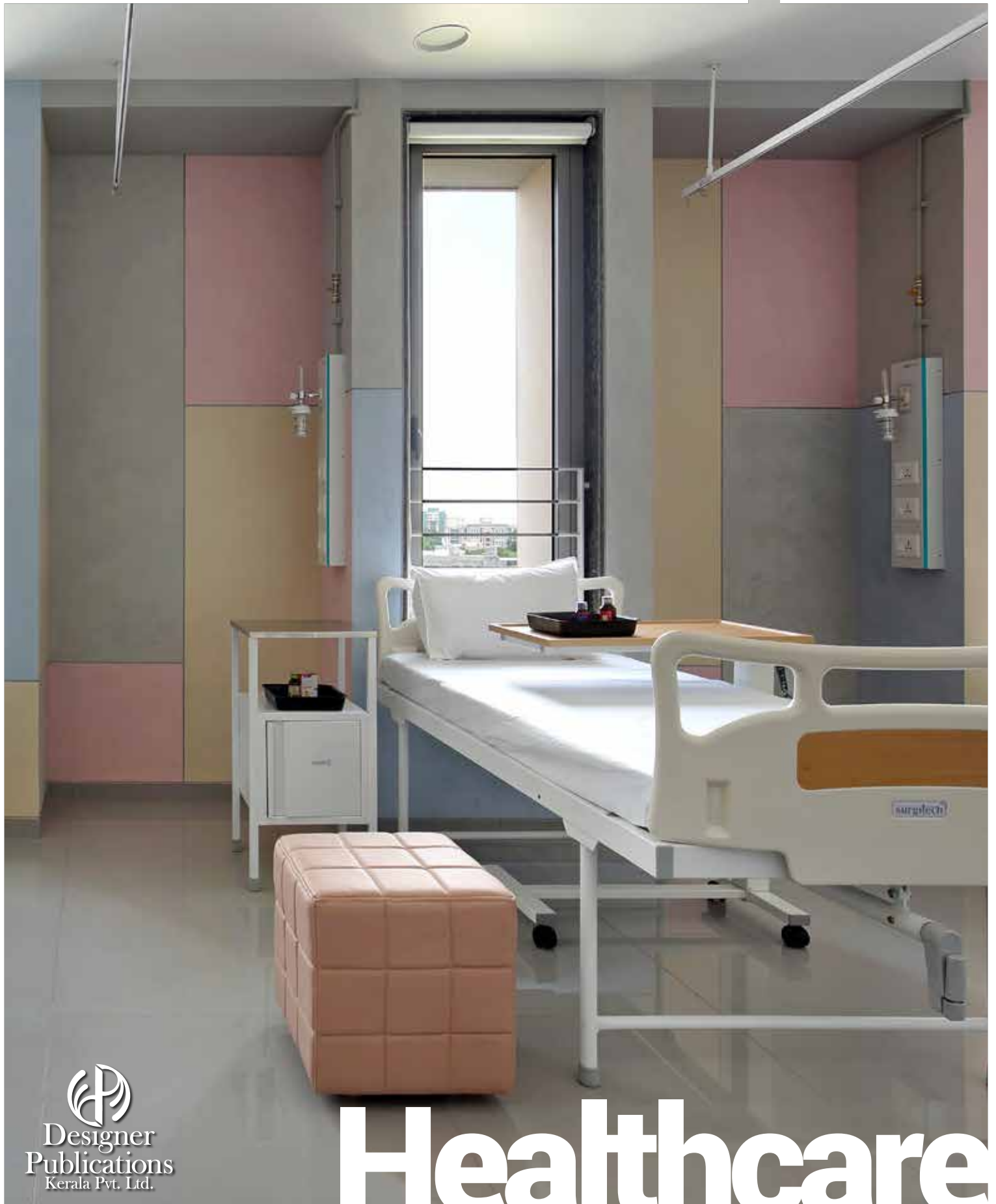


INSTITUTE[®]
OF INDIAN
INTERIOR
DESIGNERS

Inscape

THE OFFICIAL PUBLICATION OF IIID

AUG 2020 VOL. 01 ISSUE 07 ₹100




Designer
Publications
Kerala Pvt. Ltd.

Healthcare



Comfortable Waiting Area

Crafted & Sophisticated

Inscape Insider Maulik Patel, Inclined Studio

PROJECT INFO

NAME : INDOVASC HOSPITAL
 LOCATION : AHMEDABAD, GUJARAT
 DESIGN PRACTICE : SHAILAHA HARISH DESIGN STUDIO
 CLIENT : DR.SRUJAL SHAH (MS, MCH) VASCULAR & ENDOVASCULAR SURGEON
 AREA : 8133 SQ.FT.

“

An outstanding experience created by leveraging the physical qualities of an environment to project a distinctive identity that embodies and reflects the aspirational qualities of Indovasc as a brand

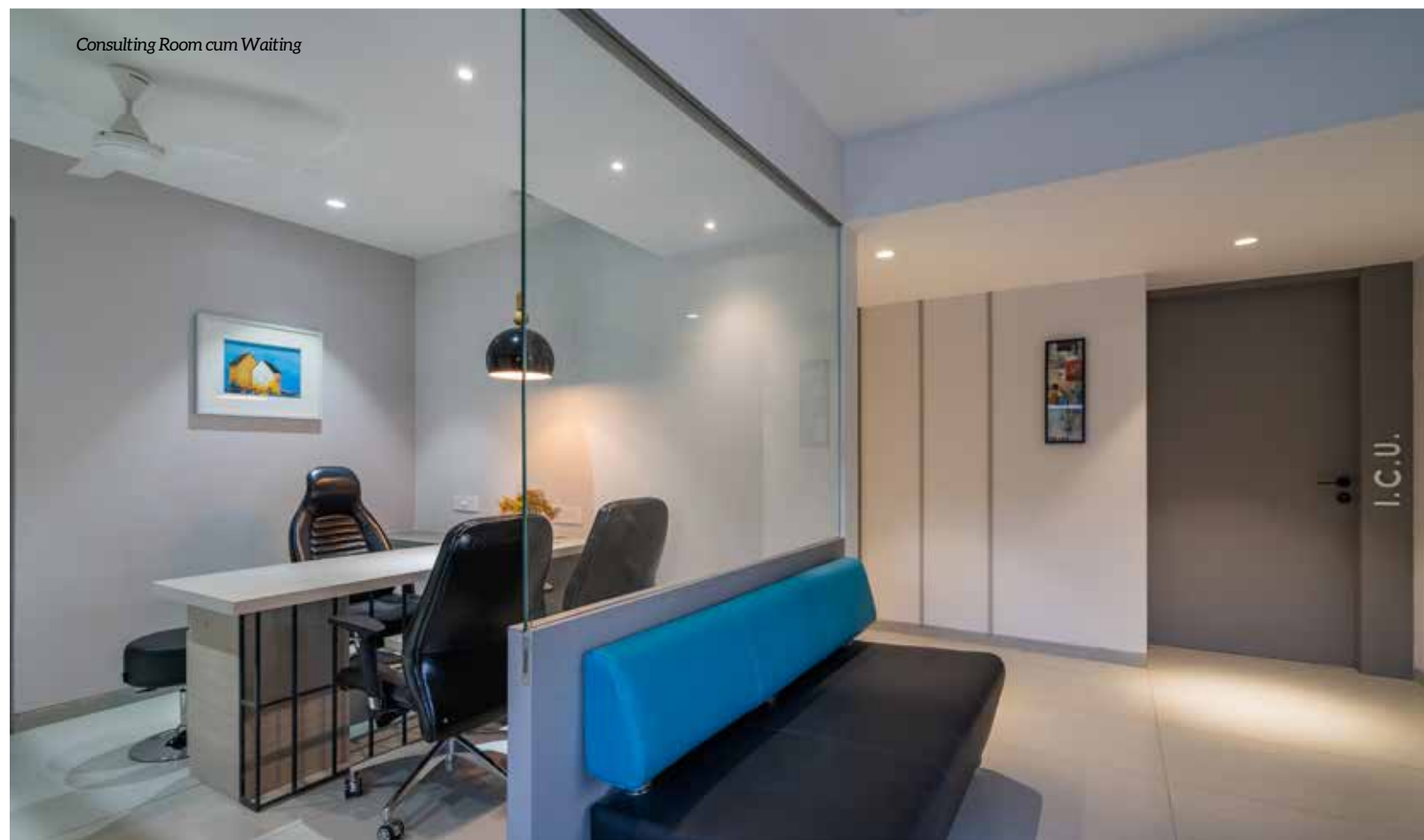
Healthcare spaces are being redefined in the current times. We are seeking comfortable environments to rest and heal. One such design was embarked by Shailja Harish Design Studio in Ahmedabad. They have transformed the healthcare space into a sophisticated healing environment.



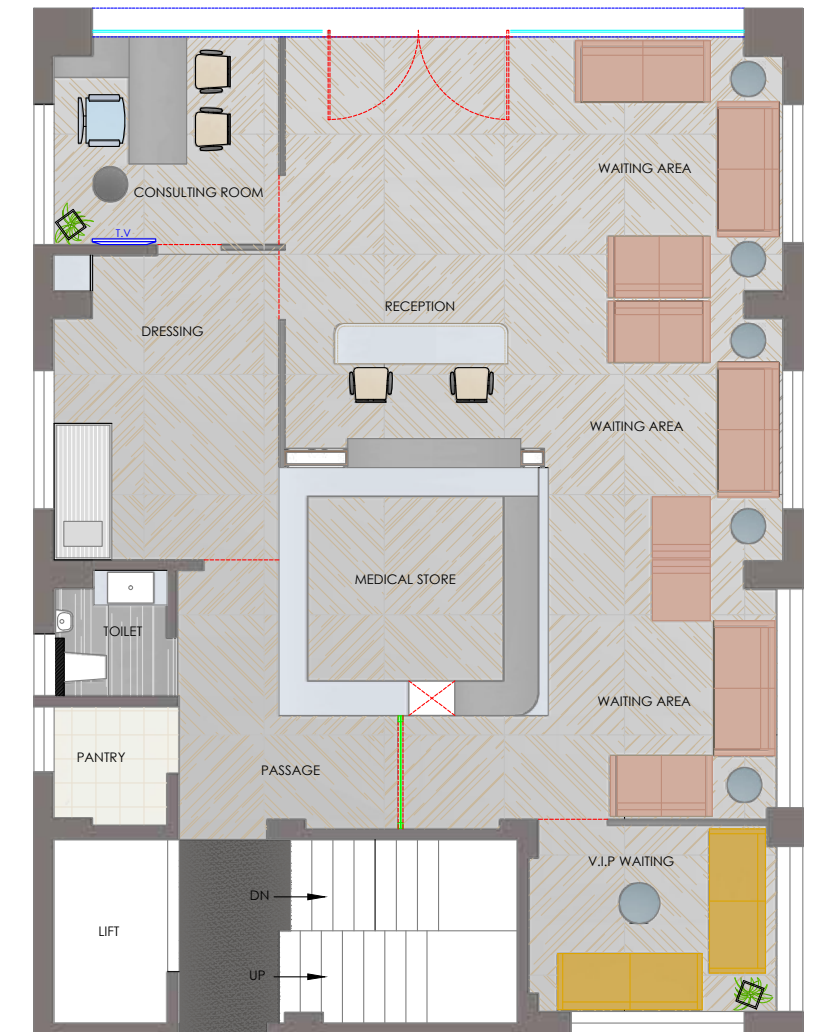
Well ventilated rooms

Indovasc is Ahmedabad's leading vascular surgery hospital designed on the concept of imbuing health promoting qualities into health care facilities. An outstanding experience created by leveraging the physical qualities of an environment to project a distinctive identity that embodies and reflects the aspirational qualities of Indovasc as a brand. It is a place that visually communicates their mission, culture and values while spatially promoting, supporting and enabling the behaviors and actions associated with their broader goals.

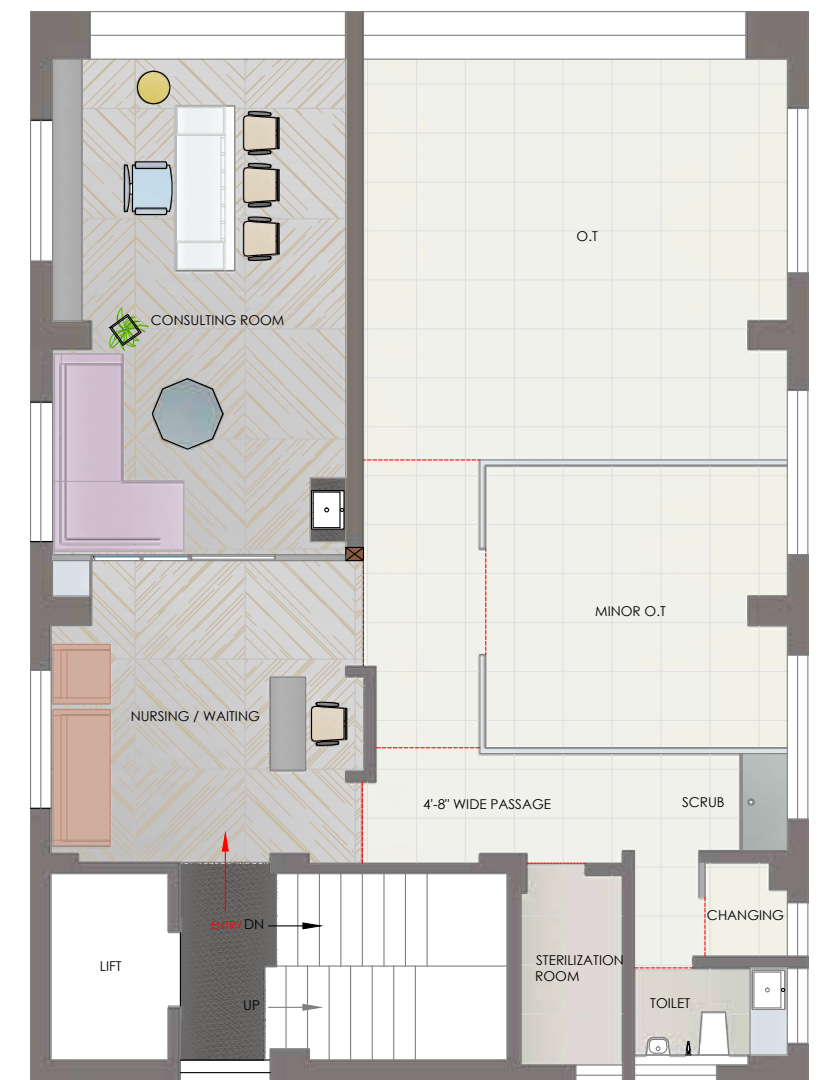
Given the expanding health care industry, quality of patient care is directly influenced by the quality of interiors in health care setting. Indovasc Hospital is broadly conceived involving two aspects, first being understanding the need for quality care in medical environment and second is the business of health care.



Consulting Room cum Waiting



GROUND FLOOR



FIRST FLOOR



SECOND FLOOR



THIRD FLOOR

Sophisticated environments can engage patients into a conscious process of inner healing and mental peace. The design team's big idea was to create more comfortable and home-like space which created a sense of hope and confidence among all the patients alike, visitors, staff and the doctors as well.

In order to achieve the ingenuity and detail each space were applied with soft colours on walls and vibrant colours in furniture and wall paintings to give more natural look to rooms, also the use of artificial plants mimicked the sense of living with nature and prolific use of windows provide natural sunlight and ventilation.

The waiting room and consultation area are covered by natural Italian marble to give a luxe and lavish appearance. The focus resided on invoking natural feel and ambience in every nook and corner of the hospital, from its lighting to flooring, the play of colours and temperature with an aim of enhancing patient's recovery experience.



Neutral coloured spaces



Multi-facility Deluxe Room

Staircase leading to the floors above



Doctor's Desk

Transcendence was achieved by the physical spaces that has the potential to be therapeutic, while the interior design of Indovasc radiate positive energy thus reducing stress and inducing a calm atmosphere.

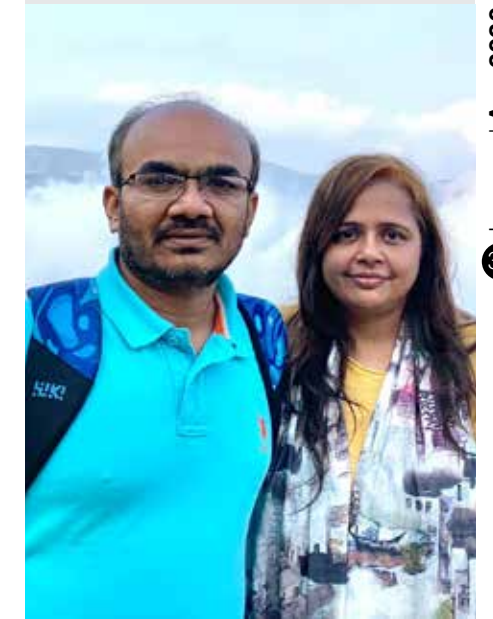
Ocean blue marble floor and elegant lighting arrangements gave a decorated charm that even transitioned to the waiting area with luxurious and comfortable sofas arranged in a way that benefits patients to sit with their family and relatives.

The reception cum waiting area is served with a vertical garden and a printed stretch of linear light in the ceiling illuminates a lively and relaxing environment. The consulting room has a soft interior to transform patient's experience and intuitive powerful words on the wall encourage them to heal. Adorable spaces provided in the suit rooms help patients to de stress and feel light in its ambience.

The Indovasc is truly an elemental hospital that serves people and care about everything they care about. Its made for the kind-hearted, and it does resonate in its interior design and forms. 🗑️



Corridor with ambient lighting



HARISH PATEL & SHAILJA PATEL

SHAILJA HARISH DESIGN STUDIO

Founded in 2001, with the context of "Elevating Peoples Life Style" openness and empathy is always at the heart of what they design at Shailja Harish Design Studio. It is an award winning firm, extraordinarily effective at listening to their client's requirements and readily accessible throughout the work. They have an integrated design team providing the best designs, where they cherish fulfilment and happiness. The team believes that the best interior designs can only be created by passion and commitment.

The firm driven by focus on the pursuit of excellent design standards achieving total satisfaction

Through their extensive knowledge of interior design trends, they craft unique solutions with harmonious spaces. They keep a high level of integrity and effectiveness in every project.